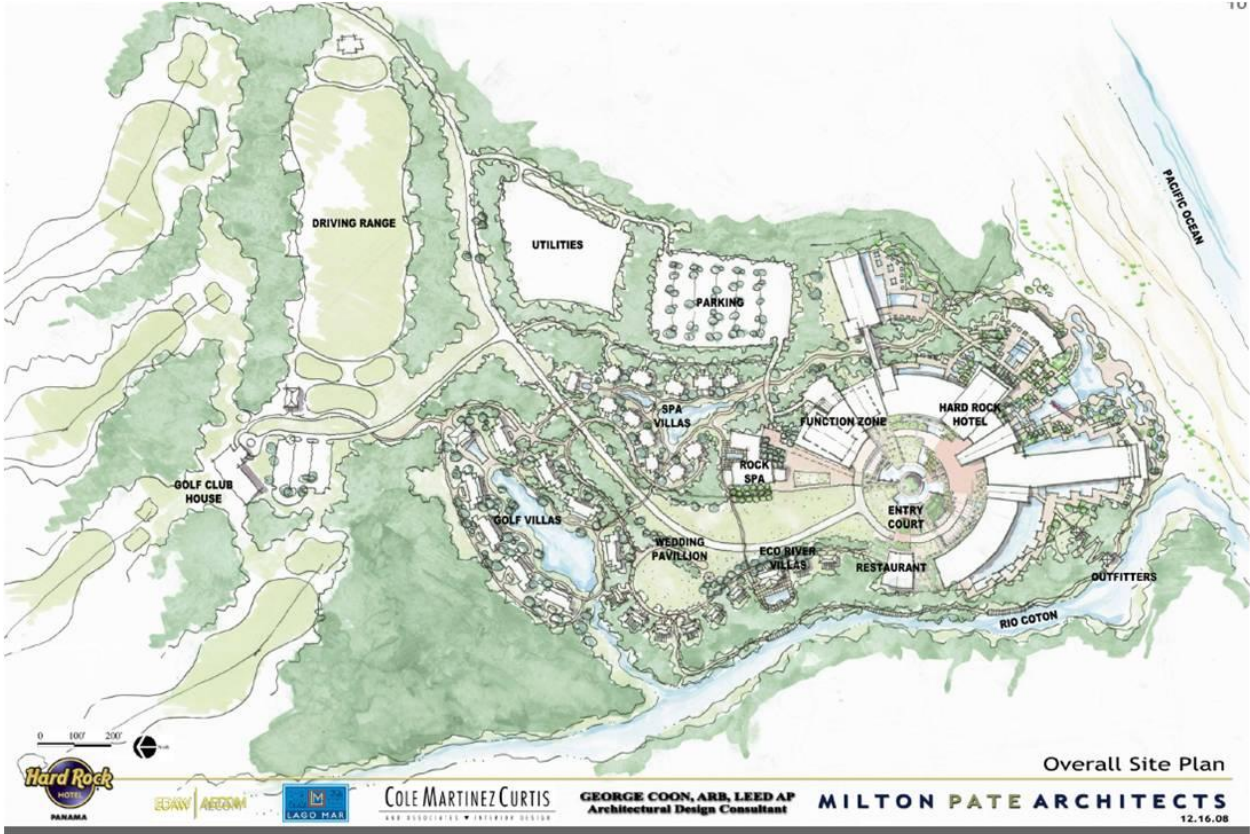


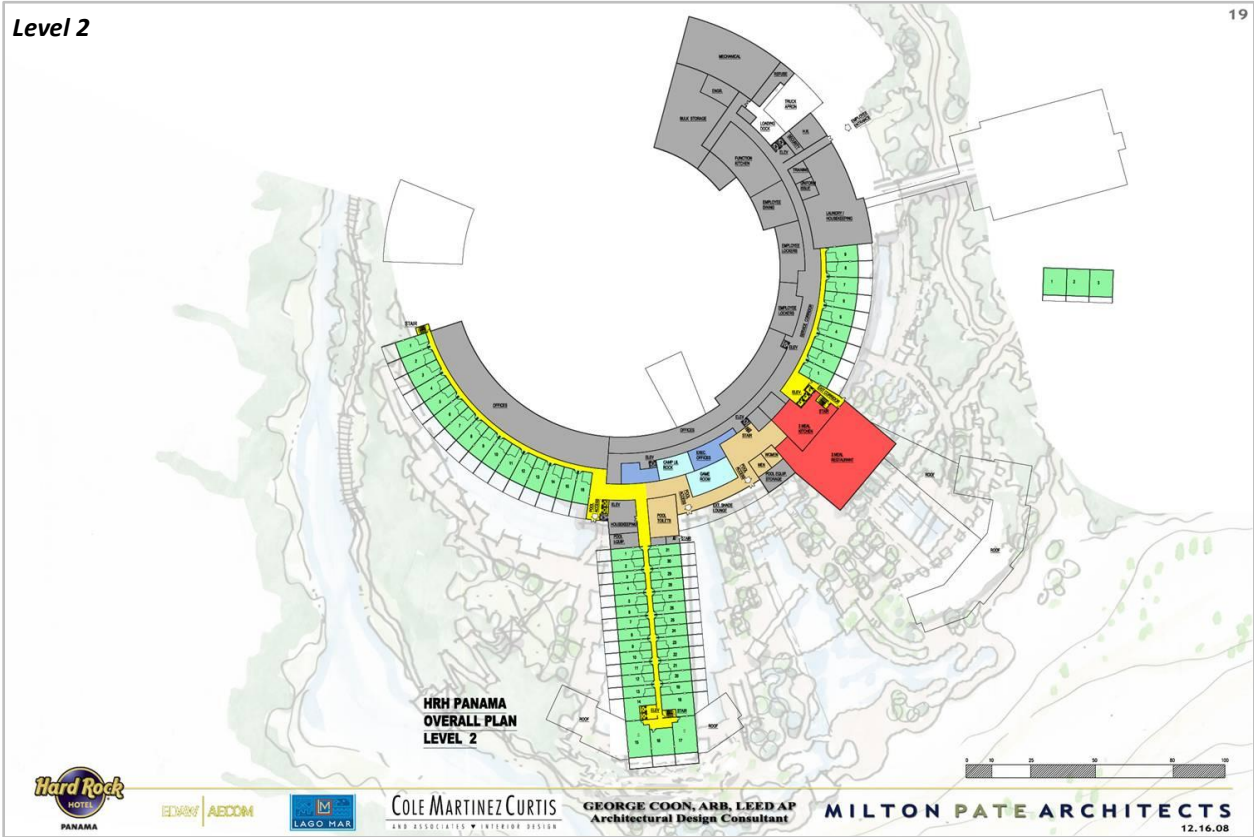
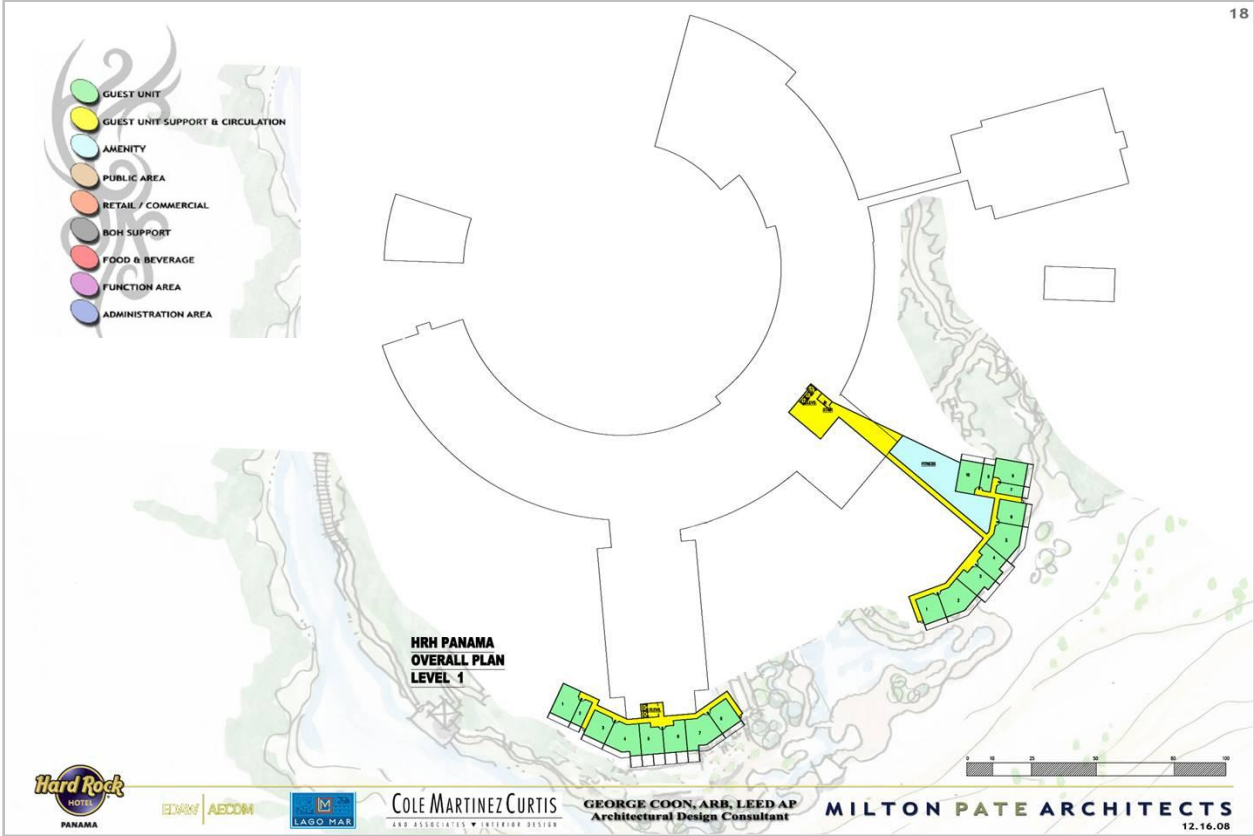
Exhibit A: Survey/Plot Plan for the Hard Rock Hotel Panama

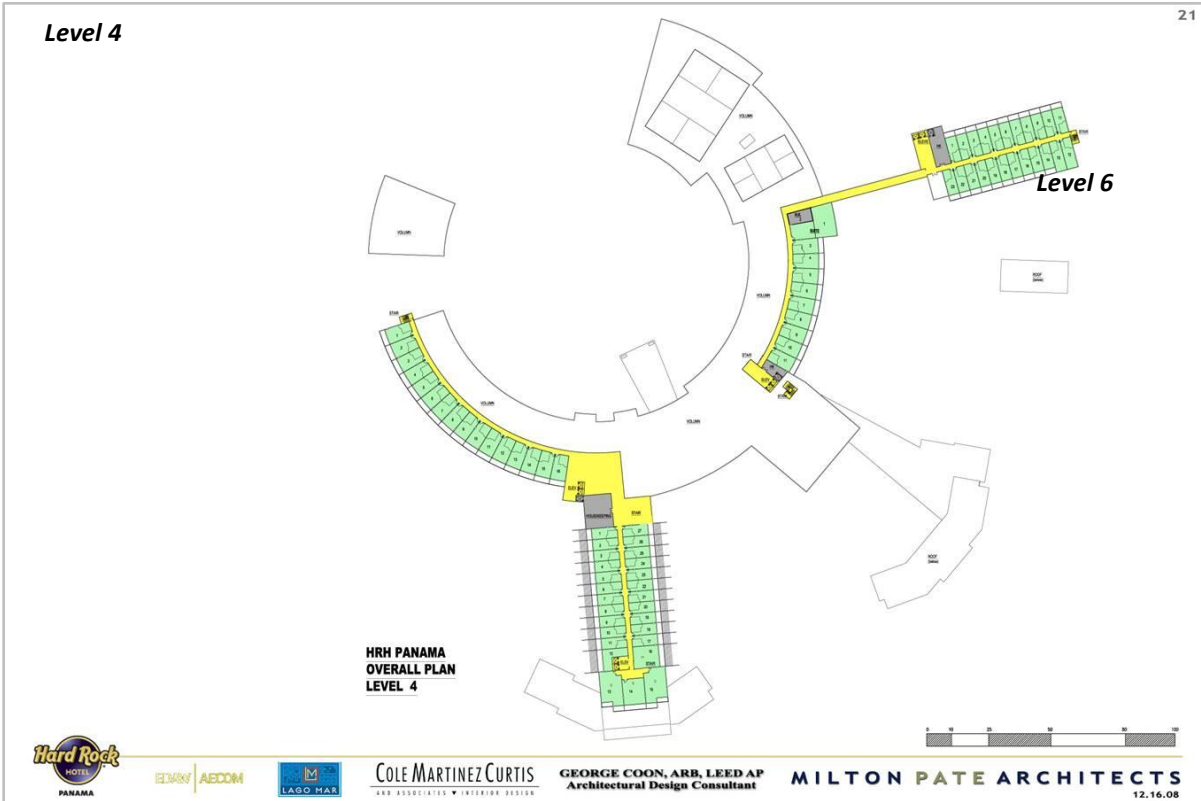
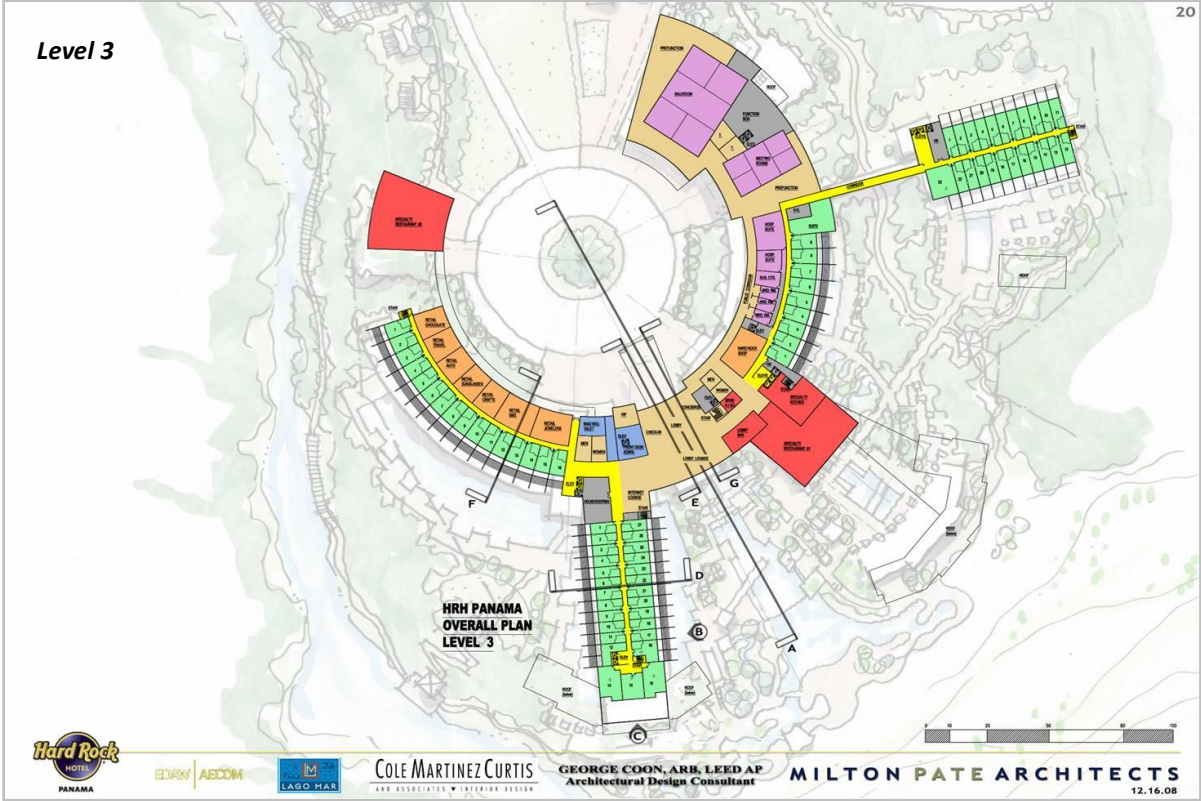
The attached shows the land and building plan for the Hard Rock Hotel Panama. The diagrams are drawn from the Design Concept plan approved by the Hard Rock in December 2008. They consist of a representation of the overall land plan and a series of drawings showing the allocation of residential and commercial space on each level of the building.

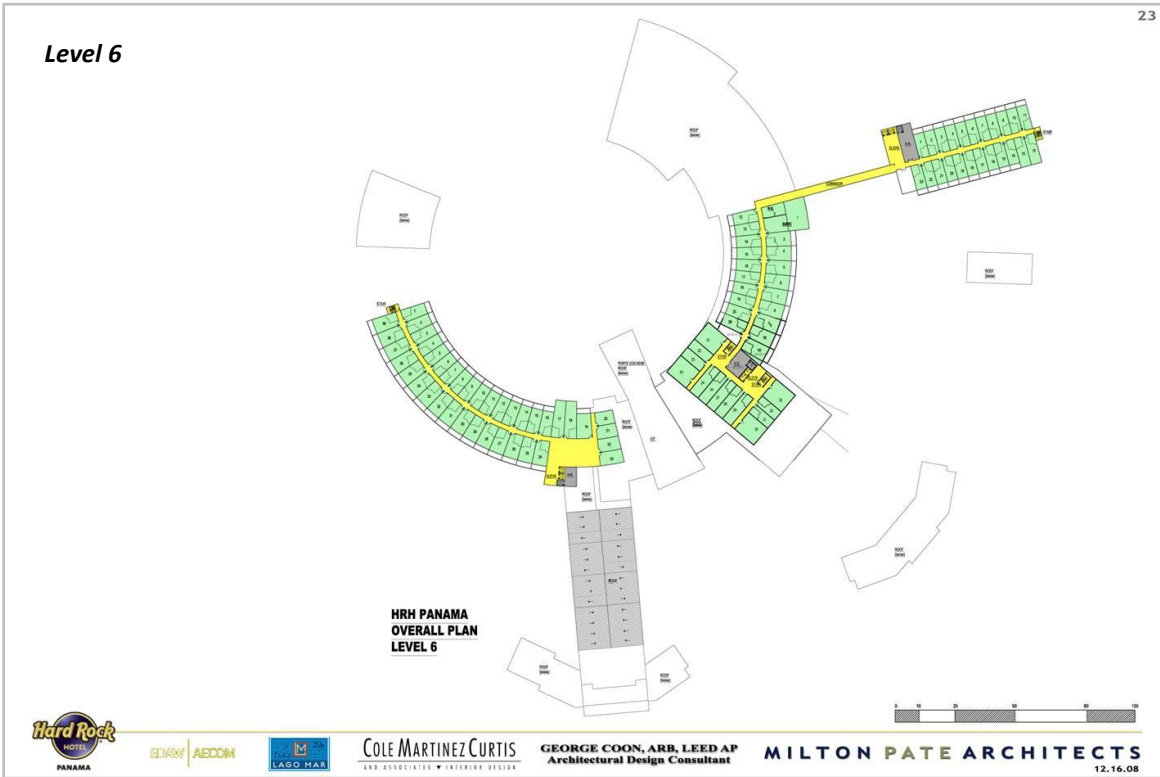
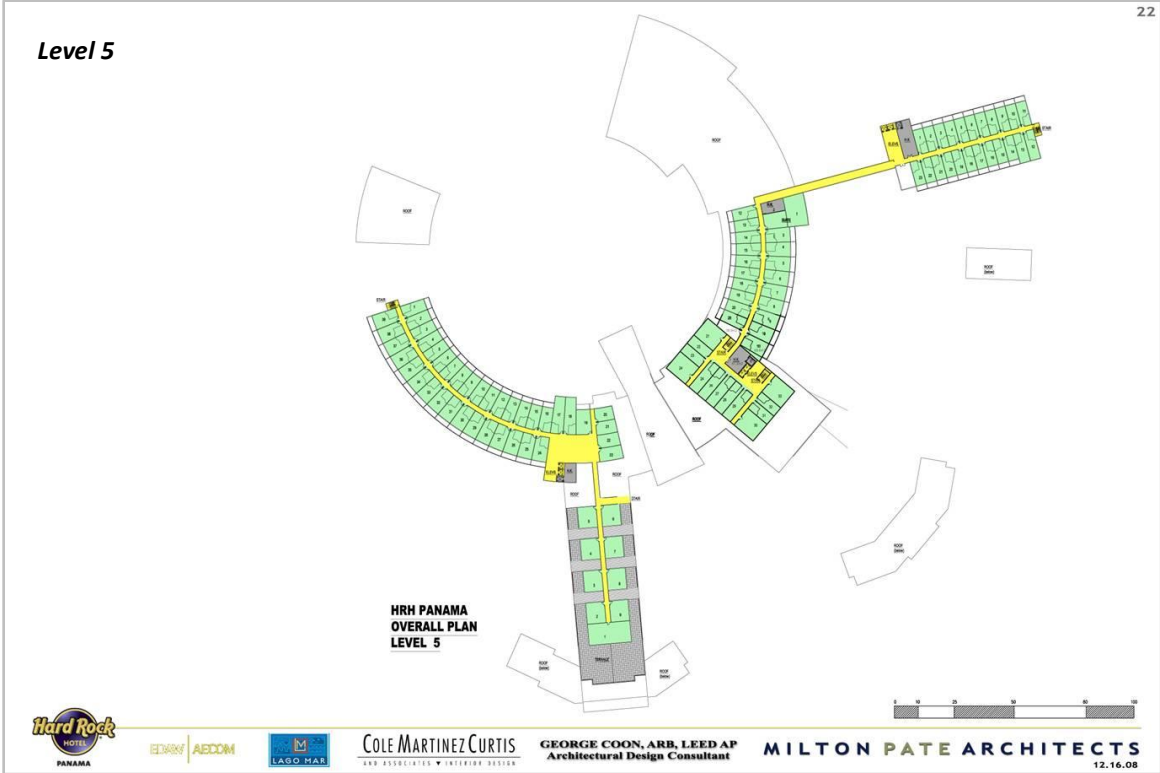


The drawing above shows the overall site plan. (The drawing is oriented so that north is to the left.) The driving range and golf club house are planned future resort amenities, but are not part of the Hard Rock project. The detached wing to the right of the parking area, as well as the Golf and Eco villas are planned elements of the second phase of the Hard Rock Hotel development.

Level 1: The drawing below shows the first level of the plan. (The drawing is oriented so that north is to up.) The remaining drawings go up level by level through the building.

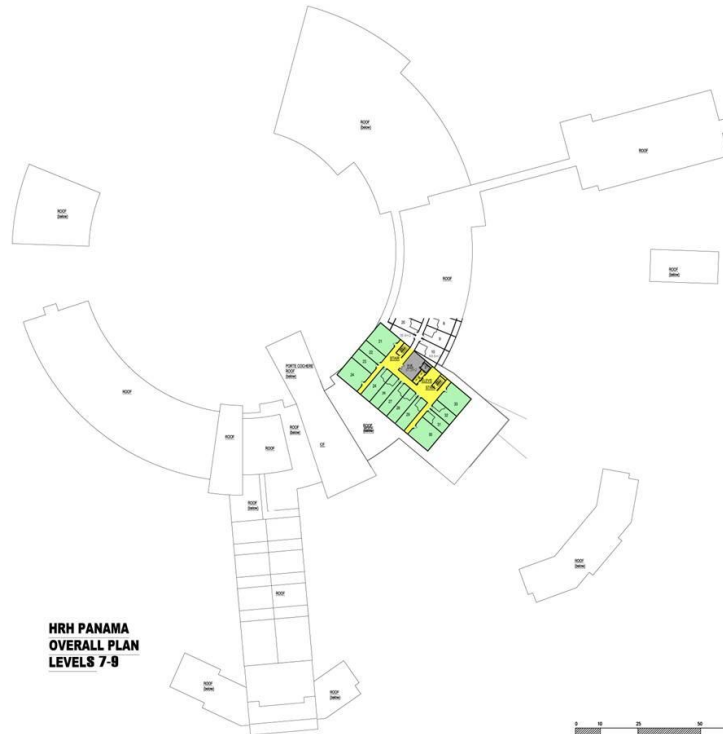






Level 7, 8 and 9

Tower units only



**HRH PANAMA
OVERALL PLAN
LEVELS 7-9**



COLE MARTINEZ CURTIS
ARCHITECTS

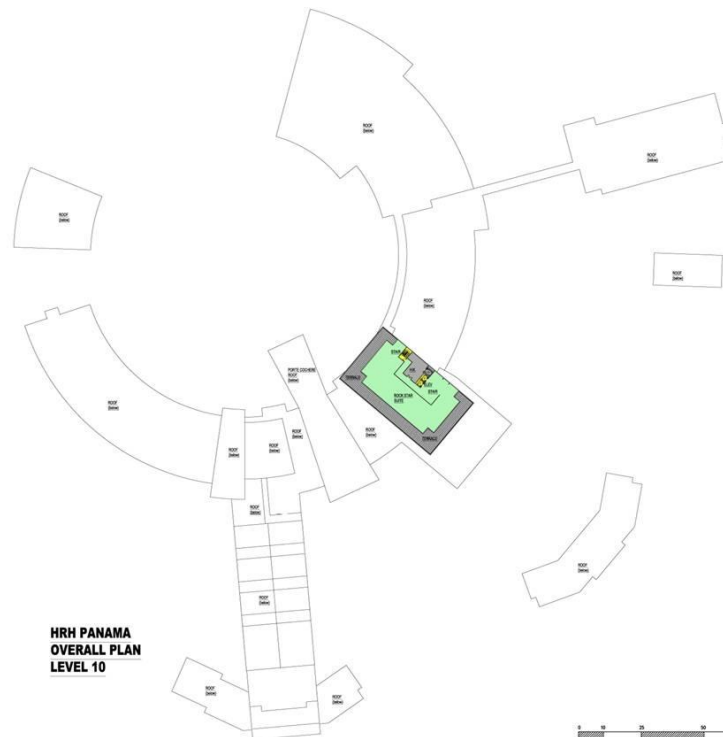
GEORGE COON, A.R.B., LEED AP
Architectural Design Consultant

MILTON PATE ARCHITECTS

12.16.08

Level 10

Rock Star Suite



**HRH PANAMA
OVERALL PLAN
LEVEL 10**



COLE MARTINEZ CURTIS
ARCHITECTS

GEORGE COON, A.R.B., LEED AP
Architectural Design Consultant

MILTON PATE ARCHITECTS

12.16.08